

## Structural Interpretation and Depth Estimation from Aeromagnetic Data of Abigi-Ijebu-Waterside area of Eastern Dahomey Basin, Southwestern Nigeria

Osinowo, Olawale Olakunle, Adabanija, Moruffdeen A. and Adewoye, Oluwatoyin Adebayo

Received: May 21, 2018; accepted: September 03, 2019; published on line: October 01, 2019

### Resumen

Los datos de alta resolución aeronáutica (HRAM) de la costa de Abigi-Ijebu en la parte oriental de la cuenca Dahomey en el sudoeste de Nigeria se filtraron, transformaron, mejoraron, analizaron e interpretaron en términos de estructuras, geometría del basamento y espesor sedimentario, para evaluar el potencial de prospección petrolera de este sector de la cuenca Dahomey, así como proporcionar información relevante que podría apoyar la campaña de exploración de hidrocarburos del descuidado brazo oriental de la cuenca Dahomey, que recientemente ha demostrado ser prolífico con el descubrimiento de yacimientos de petróleo Aje y Ogo en la parte costera de la cuenca. Los datos de HRAM se filtraron para eliminar el ruido cultural y de fondo, continuaron hacia arriba para suprimir los efectos de fuentes poco profundas y mejorar el efecto de roca del sótano que emana de fuentes relativamente más profundas. Los datos también se redujeron al polo a baja latitud para simplificar las anomalías magnéticas y para enfocar los picos de las anomalías positivamente simétricas con respecto a las fuentes geológicas correspondientes. Se aplicaron filtros derivados para detectar y mejorar las firmas magnéticas alineadas de forma preferencial que reflejan el marco estructural del área de estudio. El análisis espectral radial y las técnicas de ponderación de profundidad de Euler se emplearon para determinar la profundidad de las fuentes

magnéticas que generaron la topografía del basamento y, por lo tanto, el espesor de las rocas sedimentarias que cubren las rocas cristalinas.

Los derivados y filtros derivados de inclinación mejoraron y delinearon varias estructuras regionales lineales, algunas de las cuales tienen más de 15 km de longitud y una tendencia principalmente a lo largo de la dirección NE - SW. El análisis espectral y las soluciones de ponderación de profundidad de deconvolución de Euler 3D indican que la profundidad en la parte superior de las anomalías magnéticas varía desde alrededor de 100 m por encima del dato de referencia de Minna hasta más de 2,0 km por debajo del dato. La topografía del basamento revelada por las parcelas de solución de Euler indica rocas del basamento de la corteza gradual y suavemente deprimidas que pueden ser ayudadas por fallas regionales que gradualmente descendieron o deprimieron las rocas de la corteza hacia el sur para aumentar el acomodo de los sedimentos. Por lo tanto, esto sugiere un aumento en el potencial de prospección de hidrocarburos hacia el sur del área de estudio, especialmente en el mar abierto y más profundamente en el Océano Atlántico.

Palabras clave: ángulo de inclinación; Filtros derivados; Deconvolución de Euler; Topografía del basamento; Potencial de hidrocarburos; Dahomey.

---

Osinowo, Olawale Olakunle  
Adewoye, Oluwatoyin Adebayo  
Department of Geology  
University of Ibadan  
Ibadan, Nigeria

Adabanija, Moruffdeen A.  
Earth Sciences Department  
Ladoke Akintola University of Technology  
Ogbomoso, Nigeria  
\*Corresponding author: wale.osinowo@ui.edu.ng,  
olawale.osinowo13@alumni.imperial.ac.uk

## Abstract

High Resolution Aeromagnetic (HRAM) data of Abigi-Ijebu waterside in eastern part of Dahomey Basin southwestern Nigeria were analyzed and interpreted in terms of structures, basement geometry and sedimentary thickness to evaluate the petroleum potential of this sector of the Dahomey Basin as well as provide relevant information that could support the hydrocarbon exploration campaign of the neglected eastern arm of the basin, which has lately proved prolific with the discovery of Aje and Ogo oil fields in the offshore part of the basin. The HRAM data were filtered to remove cultural and background noise, upwardly continued and reduced to pole at low latitude to simplify and focus the peaks of magnetic anomalies positively symmetrical over corresponding geologic sources. Derivative filtering delineated and enhance preferentially aligned magnetic signatures that reflect the structural framework of the study area. Radial spectral analysis and Euler deconvolution depth weighting techniques were employed to determine depth to magnetic sources which

generated the basement topography and thus the thickness of sedimentary rocks overlying the crystalline rocks.

The derivatives and tilt derivative filters enhanced and delineated several linear regional structures, some of which are over 15 km in length and trend mainly along NE - SW direction. Spectral analysis and 3D Euler deconvolution depth weighting solutions indicate that the depth to the top of magnetic anomalies ranges from around 100 m above the Minna reference datum to over 2.0 km below the datum. The basement topography as revealed by the Euler solution plots indicate gradual and gently depressing crustal basement rocks which may be aided by regional faults that gradually stepped down or depressed the crustal rocks southward for increase sediment accommodation. This therefore suggests increase in the hydrocarbon prospect potential southward of the study area, especially in the offshore and deeper into the Atlantic Ocean.

Key words: tilt angle; derivative filters; euler deconvolution; basement topography; hydrocarbon potential; dahomey basin.

## Introduction

Recent advancements in geophysical data acquisition technology, improved flight specifications and acquisition of data very close to the ground surface (< 80 m – 150 m) have greatly improved the capacity of aeromagnetic survey to generate High Resolution Airborne Magnetic (HRAM) data which provide detailed geological information required for mapping subsurface geological structures (Reeves, 2005). HRAM data have also proved very successful in mapping topographical features of the subsurface basement surface which could influence the structure of overlying sediments. Large-scale aeromagnetic survey has gained relevance in locating regional faults and shear zones having huge potential as hosts for varieties of economic minerals, especially the epigenetic and stress-related mineralization (Paterson & Reeves, 1985). The method through determination of depth to basement rocks has also proved very useful in estimating the thickness of sedimentary pile above crystalline basement rocks (Reid *et al.*, 1990; Nabighian & Hansen, 2005).

In this research, high-resolution airborne magnetic data acquired for the Nigerian Geological Survey Agency (NGSA) by Fugro Geophysical Limited in 2007 were analyzed, enhanced and interpreted to delineate

structural framework and investigate the nature of the subsurface basement topography, in addition to expressing the geology and causes of the magnetic anomalies observed in the Abigi - Ijebu waterside area in southwestern Nigeria. The study area is situated in Abigi - Ijebu waterside in southwestern Nigeria, it is located on the flank of the eastern part of the Dahomey Basin, it is bordered in the south by the Atlantic Ocean and lies between longitude 4°00'E and 4°30'E; and latitude 6°20' N and 7°00' N (Figure 1).

Abigi in Ijebu waterside was in the past explored for its hydrocarbon potential mainly because of its proximity to Escravos in western Niger Delta, southern Nigeria and also for the occurrence of huge deposit of tar sands (bitumen), the deposit has been reported as the second largest deposit in the world, after that of Alberta in Canada. This study therefore seeks to investigate the subsurface of Abigi-Ijebu waterside and environs through the analyses of aeromagnetic data of the area with the object of providing information that could generate requisite information likely to further aid the exploration campaign of that section of the Dahomey Basin, especially with the success stories of oil discovery in Aje and Ogo fields offshore and western end of the Nigerian sector of the Dahomey Basin in southwestern Nigeria.

### Geology of the Study Area

The Dahomey Basin forms one of the series of West African Atlantic marginal basin that were initiated during the period of rifting in the late Jurassic to early Cretaceous (Omatsola & Adegoke, 1981). During the rifting stage, there was basement fracturing and initial separation between the African and South American plates (Brownfield & Charpentier 2006). Several marginal basins were developed at this time resulting to block faulting, fragmentation and subsidence on the central Paleozoic basement rock (Omatsola & Adegoke, 1981).

The basin stretches along the coast of Nigeria, Benin Republic, Togo and Ghana along the margin of the Gulf of Guinea. It is separated from the Niger Delta by a subsurface basement high referred to as the Okitipupa Ridge. Figure 1 presents the geology of the study area while the insert is the geologic map of the Nigerian sector of the Dahomey Basin with adjacent crystalline basement rocks. The geology of the study area depict that of a transition zone between the Basement Complex rocks of southwestern Nigeria in the north and the sedimentary units that unconformably overly the depressed part of the crystalline rocks at the edge of the Dahomey Basin, around Abigijebu waterside area of the southwestern Nigeria. The Basement Complex rocks has been reported by various authors to comprise largely

of a metasedimentary series with associated minor metaigneous rocks, which have been variably altered to migmatitic gneisses, and the Older Granites suite of both intrusive and replacement origin (Jones & Hockey, 1964; Grant, 1971; Burke *et al.*, 1976). The northern part of the study area is dominated by crystalline rocks such as biotite granite gneisses and granodiorite, migmatite gneiss, quartz-feldspartic granulites, undifferentiated schist, quartz-schist and quartzites (Figure 1) (Burke *et al.*, 1976).

In the southern part of the study area, sedimentary rock units defined through a stratigraphic setting of the eastern Dahomey Basin, as put together by several authors, such as Adegoke (1969), Ogbe (1970), Kogbe (1974), Billman (1976), Omatsola & Adegoke (1981), Ako *et al.*, (1980), Okosun (1990) and Idowu *et al.*, (1993), presented five (5) lithostratigraphic formations from the Cretaceous to Tertiary ages (Figure 1). The succession from the oldest to the youngest includes Abeokuta Group, Cretaceous in age and consists of Ise, Afowo and Araromi Formations as members. The Abeokuta group is immediately overlain in quick succession by Paleocene Ewekoro Formation, Eocene Ilaro Formation, Coastal Plain Sands and the Recent Alluvium in that order of succession. Table 1 presents the stratigraphic column of eastern Dahomey Basin as compiled by Obaje (2009).

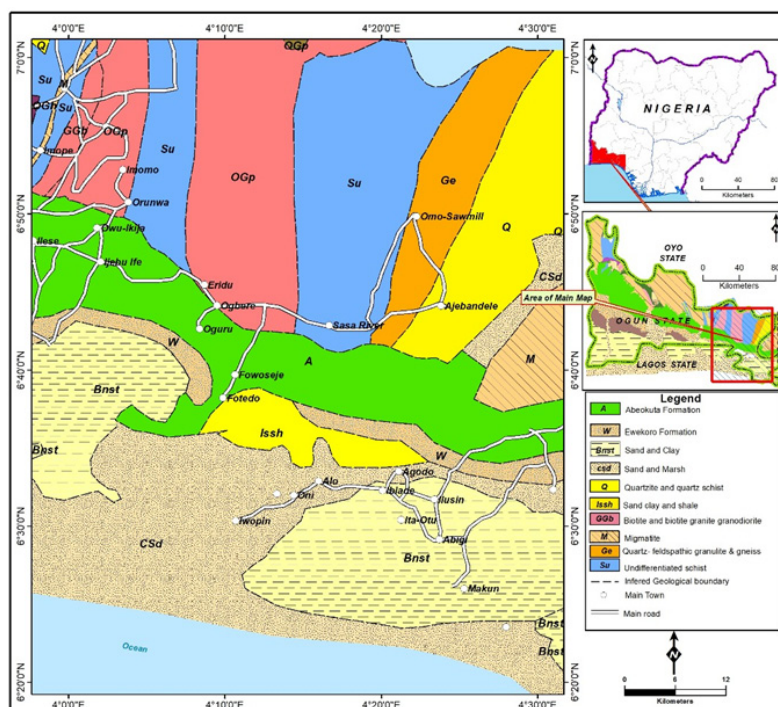


Figure 1. Geological map of the study area (NGSA, 2009).

Table 1 Stratigraphic Column of the Eastern Dahomey Basin (Obaje, 2009).

Reyment, 1965 Adegoke, 1969		Billman, 1976		Omatsola and Adegoke, 1981		Okosun, 1990	
Maastrichtian	Araromi Shale (Informal)	Pal	Nkporo Shale	Pal	Ewekoro Fm	Pal	Araromi Formation
		Maastr.		Maastrichtian		Maastrichtian	
	Abeokuta Formation	Senomanian	Awgu Shale	Maastrichtian			
		Turonian	Abeokuta Formation	Turonian	Afowo Formation		
		Albian	Unnamed Albian Sands			Upper-Albian Senonian	Abeokuta Formation
		Pre-Albian	Unnamed Older Folded Sediments	Neoconian-Albian	Ise Formation		

Abigi-Ijebu waterside is situated at the edge of the Dahomey Basin where the basin gradually grades into the Basement Complex rocks of the southwestern Nigeria. Here, basement rocks are exposed in the north with no sediment cover. The central and towards the south of the study area, sediment thickness gradually build up and grades from the very shallow part of the basin into the progressively deeper part of the basin. The thickness of the sedimentary pile as recorded by Adegoke (1969) was put at just few tens of meters to somewhere just above 1000 m.

**Materials and Methods**

This section briefly describe how the aeromagnetic data of Abigi-Ijebu waterside area of southwestern Nigeria, used for this study, were acquired, as well as presents some of the various processing techniques employed to filter out unwanted signals, transform magnetic anomalies and enhance salient desirable subsurface magnetic attributes that

helped to generate geological information used to image and understand the terrain.

*Data Acquisition*

Airborne magnetic data acquisition was done using a 3 x Scintrex CS3 Cesium Vapour magnetometer having sensitivity of 0.0006 nT  $\sqrt{\text{Hz}}$  rms, gradient tolerance of 40000 nT/meter and absolute accuracy of less than 2.5 nT throughout the range. The magnetometer which was attached to the tail stinger (behind the empennage of the aircraft) of Cessna Caravan 208B ZS-FSA specialized aircraft uses FASDAS data acquisition system and took magnetic readings at 0.1 seconds recording interval, which is approximately 7 m interval. The aircraft flies at a sensor mean terrain clearance of 80 m, flight line spacing of 500 m, tie line spacing of 5000 m and flight and tie lines trends of 135° and 45° respectively. The flight was flown to run perpendicular to the general geological strike of the field (NGSA 2004; Reeves, 2005).



Data processing involves the transformation of acquired data from the original raw form to a state that bears simple and direct relationship with the terrain/subsurface geology and thus easier to interpret. The processing steps described in this paper exclude the preprocessing operations such as tie-line and micro-leveling, deculturing and others employed to remove residual flight line artifacts and filtering of cultural effects respectively, by the data acquisition company.

The preprocessed/partially processed aeromagnetic data obtained from NGS A were gridded with a cell size of between 1/3 to 1/5 of the flight line spacing, using minimum curvature gridding algorithm (Webring, 1981). The gridded data were thereafter subjected to several filtering operations, example includes Guassian low cut filter to remove the regional trend from the acquired Total Magnetic Intensity (TMI) and thus generate residual magnetic signal while Butterworth, low and high cut as well as band pass filters helped removed noise and noisy data such as cultural and background noise. Data enhancements techniques were applied to improve data quality and amplify specific components of the measured data, especially such components that would ease interpretation. Attribute extraction and derivative determination were performed to further aid interpretation. Horizontal or vertical derivatives, tilt derivatives and total horizontal derivative of the tilt derivative for example are good tools for lineament extraction and thus aid structural interpretation (Verduzco *et al.*, 2004). Upward continuation filter was applied to minimize short wavelength signals corresponding to shallow sources and thus enhance deeper source effects. The filter also acts as a cleaning filter because of its ability to remove shallow magnetic signatures that emanate from cultural features and thus enhance relatively deeper anomalies.

#### *Reduction to Pole at Low Latitude (RTPLL)*

The shape of magnetic anomaly over a causative body is determined among other factors by shape, size of the causative body, depth of occurrence, magnetic inclination and declination of the inducing field at the survey location (Baranov & Naudy, 1964; Salem *et al.*, 2007). The magnetic inclination and declination is dictated by geographical location and thus latitude has effect on the magnetic anomalies. Magnetic anomaly over a body at the poles, north or south, where magnetic inclination is  $90^\circ$  ( $I = 90^\circ$ ) or  $0^\circ$  at the equator ( $I = 0^\circ$ ) is believed to be simple to interpret and most importantly the anomaly peak is located

directly over the causative body (Silva, 1986; Arkani-Hamed, 1988; Lu *et al.*, 2003). At the mid north and mid south latitudes however, the anomaly becomes complex with the anomaly peak not lying directly over the corresponding source. Therefore to simplify anomalies and ensure that anomalies lie directly above the causative body, reduction to pole correction is usually applied.

Ijebu waterside in southwest Nigeria is located at mid north, slightly above the equator. It is also located at low latitude (around latitude  $7^\circ$ ), therefore anomalies in this study area are presented in complex form. Also the peaks of the anomalies may not be properly placed on top of the causative sources. This therefore demands the need to carry out reduction to pole correction to simplify the anomaly and for correct focusing of anomaly peak over the causative source. Reduction to the pole for data acquired at low magnetic latitudes (equatorial latitudes) is known to blow-up anomalies originating from north-south lying geological features (Li, 2008). The blow-up is associated with strong amplitude correction that is applied when the declination and wavenumber direction is  $\delta/2$  (That is, a magnetic East-West wavenumber) (MacLeod *et al.*, 1993; Li, 2008). Thus a specialized correction known as reduction to pole at low latitude was usually applied. Reduction to the Equator (RTE) could also be applied, but this will invert the magnetic data making the anomalies appear negatively symmetrical over corresponding geological sources. Reduction to the pole at low latitude (RTPLL) incorporates a separate amplitude correction which prevents signals from north-south geological features from becoming over blown and thus dominating the results (Keating & Zerbo, 1996). The specialized correction will simplify anomalies and focus the anomalies peak over the corresponding causative bodies which are easier to interpret without losing any geological/geophysical relevance.

#### *Derivative and Tilt Angle Derivative filters*

Derivative-based filters were used to sharpen the edges of magnetic anomalies and to determine their locations (Mushayandebvu *et al.*, 2001). They were also used to enhance or suppress features in a given direction, such as x-, y-, and z- directions (Cooper & Cowan, 2008). The horizontal derivatives, along the x- and y-directions were calculated in order to estimate the magnetic variation along the horizontal. The vertical derivative along the z-direction on the other hand estimates vertical variation in magnetic properties of the rocks (Ekinici *et al.*, 2013). Tilt derivative

filter and the horizontal derivative of the tilt derivative grids were also generated to further enhance structural signatures of the magnetic data across study area. The tilt derivative filter, an analytic signal amplitude normalized ratio of vertical derivative to a value of total horizontal derivative (equations 1 & 2) is apt at enhancing the edges of features and other directional information inherent in potential data which oftentimes are of great structural significance (Miller & Singh, 1994; Verduzco *et al.*, 2004; Ferreira *et al.*, 2011).

$$TLT = \tan^{-1} \frac{\frac{dM}{dz}}{(ThD)} \quad (1)$$

$$ThD = \sqrt{\frac{dM}{dx}^2 + \frac{dM}{dy}^2} \quad (2)$$

TLT is the Tilt derivative filter,  $\frac{dM}{dz}$ ,  $\frac{dM}{dx}$  &  $\frac{dM}{dy}$  are the vertical and the two horizontal derivatives of the magnetic field respectively while ThD is Total Horizontal Derivative of Magnetic field.

#### Euler Deconvolution

The 3D Euler deconvolution is a depth estimating technique and it is used to determine depth and location of geologic unit or structure that produces magnetic anomaly. It uses the x-, y-, z- derivatives to determine location and depth for various idealized targets such as contact, dyke/sill, cylinder and sphere (Reid & Thurston, 2014). Each of the idealized targets is characterized by a specific Structural Index (SI), which measures the fall-off rate of the field with distance from the source. There are two methods; the 'Standard Euler method' and the 'Located Euler method'. The Standard Euler method is based on Euler's homogeneity equation (equation 3), which relates the magnetic potential field and its gradient components to the location of the sources, by the degree of homogeneity N (Thompson, 1982).

$$(x - x_0) \frac{\partial T}{\partial x} + (y - y_0) \frac{\partial T}{\partial y} + (z - z_0) \frac{\partial T}{\partial z} = N(B - T) \quad (3)$$

Where:  $x_0$ ,  $y_0$ , &  $z_0$  define the position of a source whose total field T is detected at any

point (x, y, z), B is the background value of the total field, and N is the Structural Index (SI) which is the degree of homogeneity of the source body, interpreted physically as the attenuation rate with distance (Whitehead & Musselman, 2008).

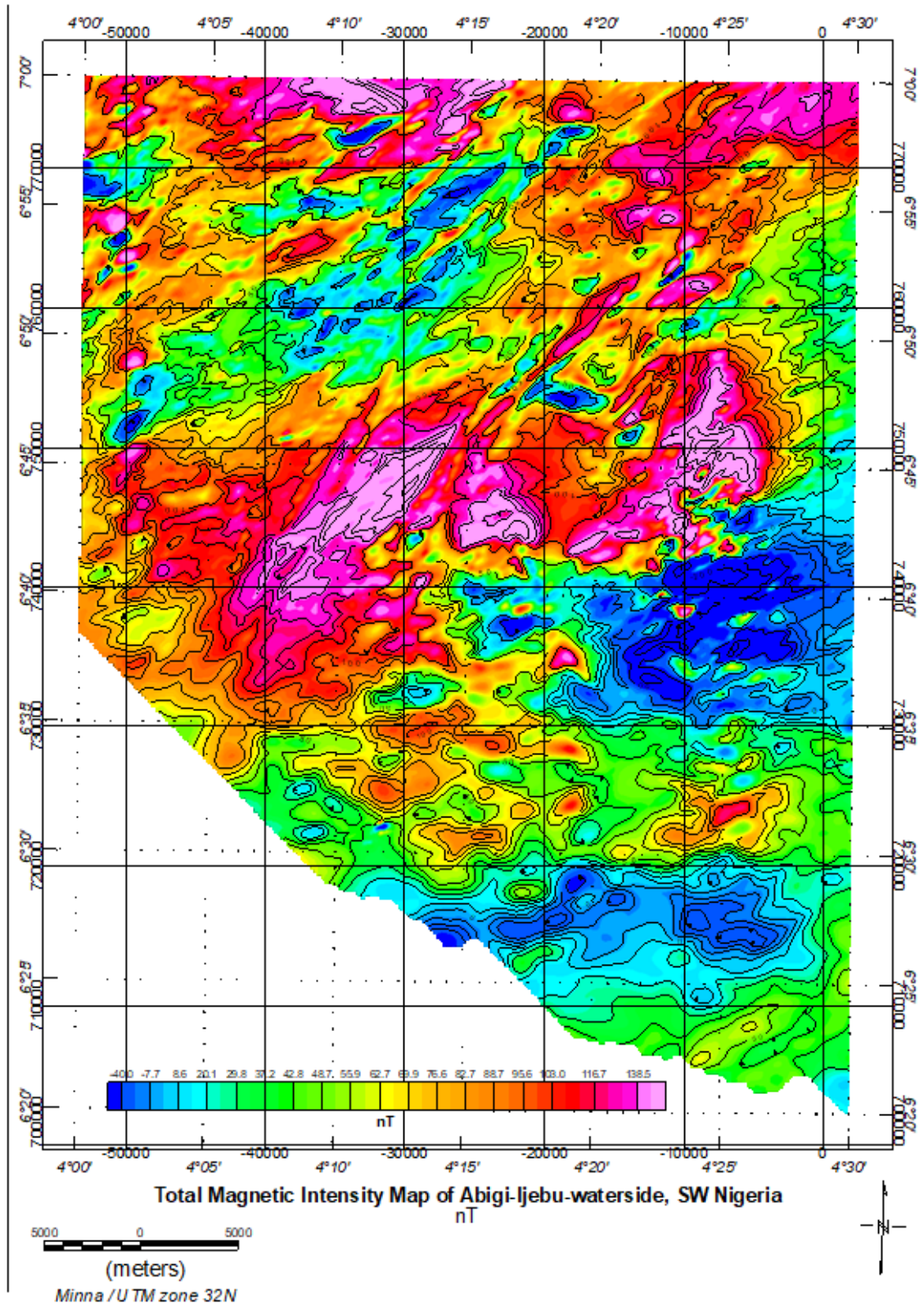
In this study, the Standard Euler deconvolution was applied to estimate depth to magnetic sources. The 3D Euler deconvolution process was applied at each solution point by setting an appropriate SI value and using least-squares inversion to solve the equation for an optimum values for  $x_0$ ,  $y_0$ ,  $z_0$  and B over a square window of 400 by 400 m which consists of the number of cells in the gridded dataset. The individual grid cell size is equivalent to a quarter of the square root of the grid area divided by the number of data point. All points in the window were used to solve the Euler's equations for solution depth, inversely weighted by distance from the centre of the window.

Finally, radial power spectrum analysis which is also useful for determining depth to volcanic intrusion or magnetic basement, based on the spectral analysis of magnetic data using Fourier transform (Garcia & Ness, 1994) was carried out to confirm the result obtained from the 3D Euler deconvolution results.

#### Results and Interpretation

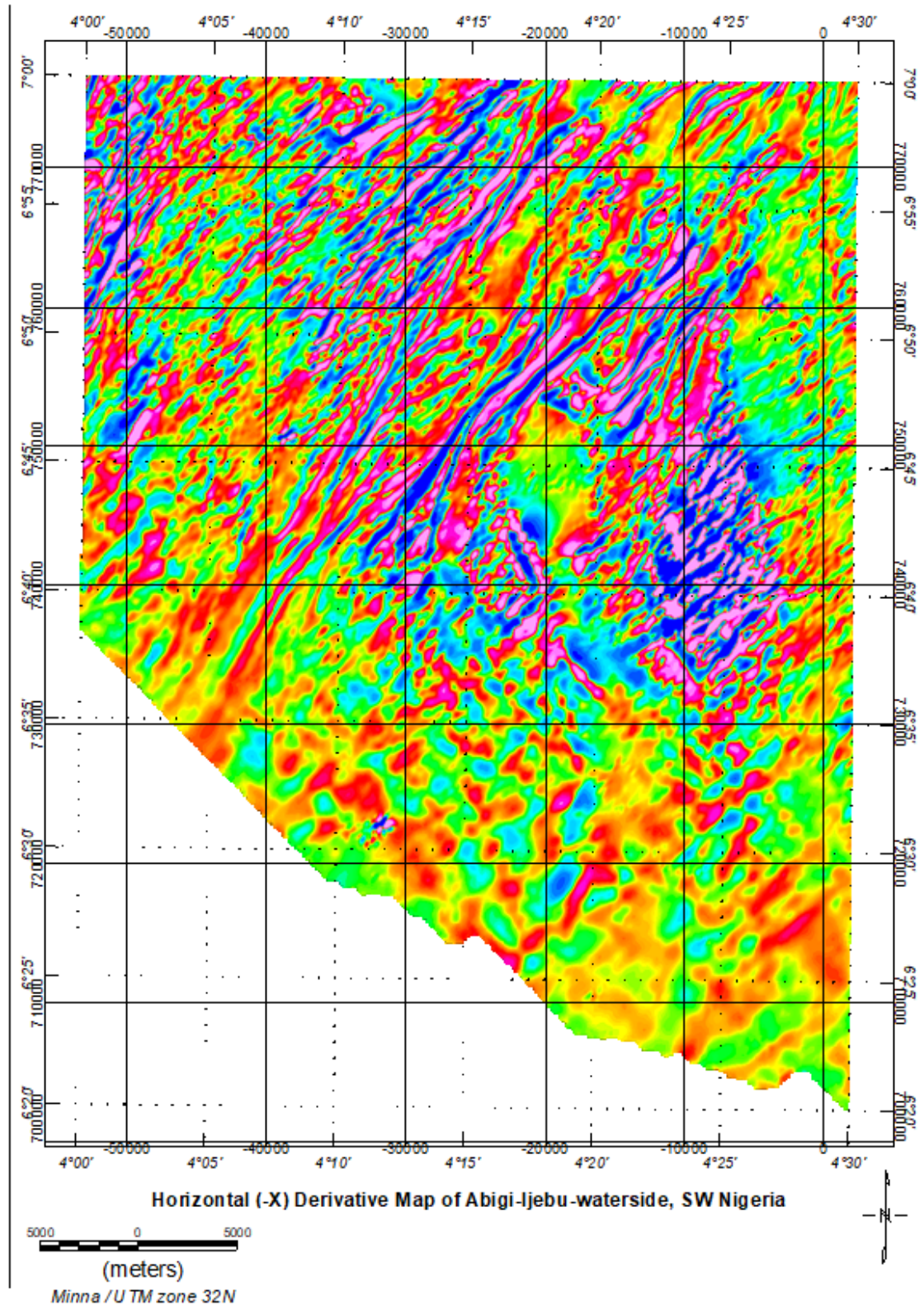
The results and geological interpretations of the processed aeromagnetic data of Ijebu waterside (study area) are presented in this section. The processed and gridded aeromagnetic data of Ijebu-waterside and environs is presented as the Residual Magnetic Intensity (RMI) map in figure 2. The map indicates short and relatively long wavelength anomalies, some of which are positive while others are negative. The positive magnetic intensities are regions of the study area having relatively high magnetic relief which correspond to regions with relatively high magnetic susceptibilities. The negative magnetic intensity areas on the other hand are areas of low magnetic relief corresponding to regions of relatively low magnetic susceptibility. Residual magnetic intensity distribution across the study area ranges from - 40 nT to 138.5 nT (Figure 2). The northern and considerable part of the central portion of the study area is dominated by high positive anomaly while the southern end displayed low negative magnetic intensity. This defines the area with high and low magnetic reliefs, respectively.

The extracted horizontal and vertical derivatives which were generated in order to

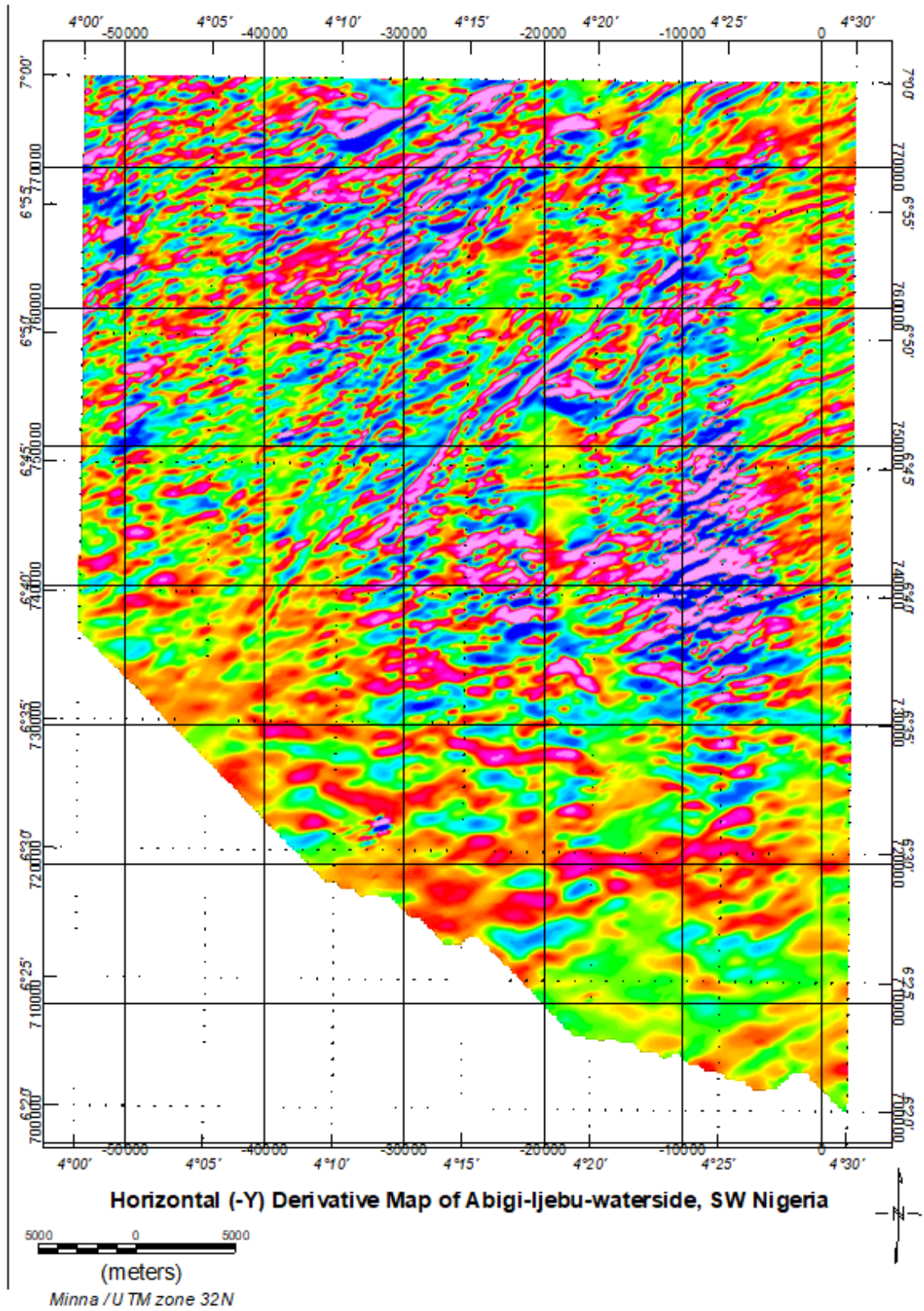


**Figure 2.** Residual Magnetic Intensity (RMI) map of Ijebu – waterside and environs.



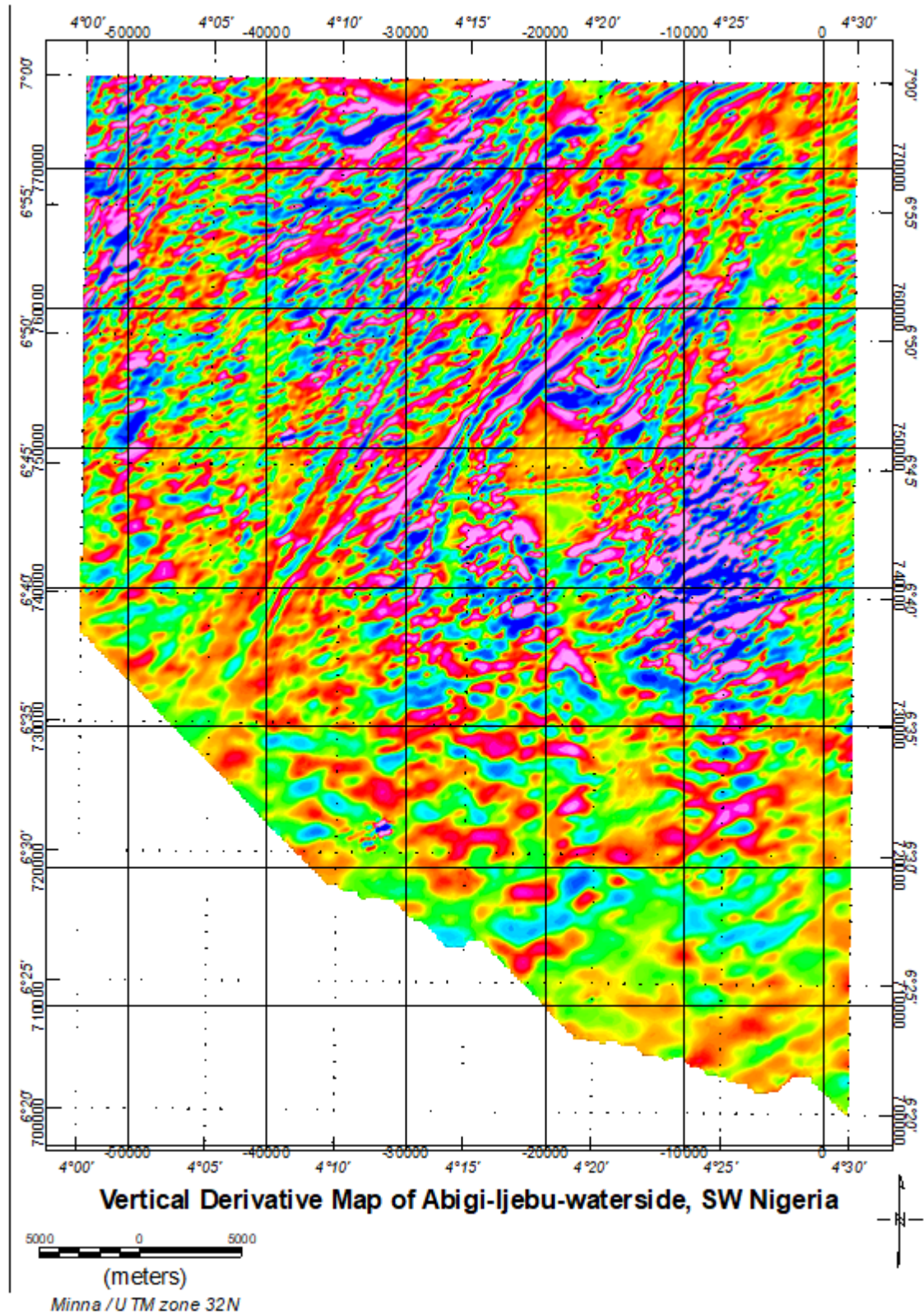


**Figure 3.** Horizontal Derivative (in x- direction) Map of Abigi, Ijebu-waterside.



**Figure 4.** Horizontal Derivative (in y- direction) Map of Abigi, Ijebu-waterside.





**Figure 5.** Vertical Derivative (in z- direction) Map of Abigi - Ijebu-waterside.

enhance linear features such as fractures, faults and sheared zones are presented in figures 3, 4 and 6, respectively. The results indicate series of linear magnetic features, many of which are aligned along NE - SW directions. Some of preferentially aligned magnetic features as observed on the derivative maps correspond to linear geological features that generate the preferentially oriented magnetic anomalies.

The tilt derivative and the total horizontal derivative of the tilt derivative grids are presented in figures 6 and 7 respectively. The figures present enhanced edges of linear features which may have originated from deep and shallow sources (Miller & Singh, 1994). The gridded maps of both tilt angle derivatives and total horizontal derivative of the tilt angle derivative like the horizontal and vertical derivative maps also indicate a number of linear features which show predominant alignment of regional and extensive linear structures along NE - SW direction. The tilt derivative grids present better resolved linear structures around Abigi - Ijebu waterside with many visible and better enhanced preferentially aligned patterns in the central part of the grid unlike those observed in the vertical and horizontal derivative grids. The summary of the structural analyses which consist of results obtained from derivative grids as well as tilt angle derivative and the horizontal derivative of tilt angle derivative grid is presented in figure 8 as the lineament map of the study area. The lineament map presents only linear features that appear to originate from deeper sources and also show regional trend, being up to 5 km in length. The trend and orientation of the extracted linear features from structural analysis of aeromagnetic data of Abigi - Ijebu waterside (Figure 8) correlates positively with the established NE - SW structural trend of southwestern part of Nigeria (Burke *et al.*, 1976; Rahaman, 1976) as well as lineament map of southwestern Nigeria compiled from field observations during structural and geological mapping of the region.

#### *Euler Deconvolution / Depth Estimation Results*

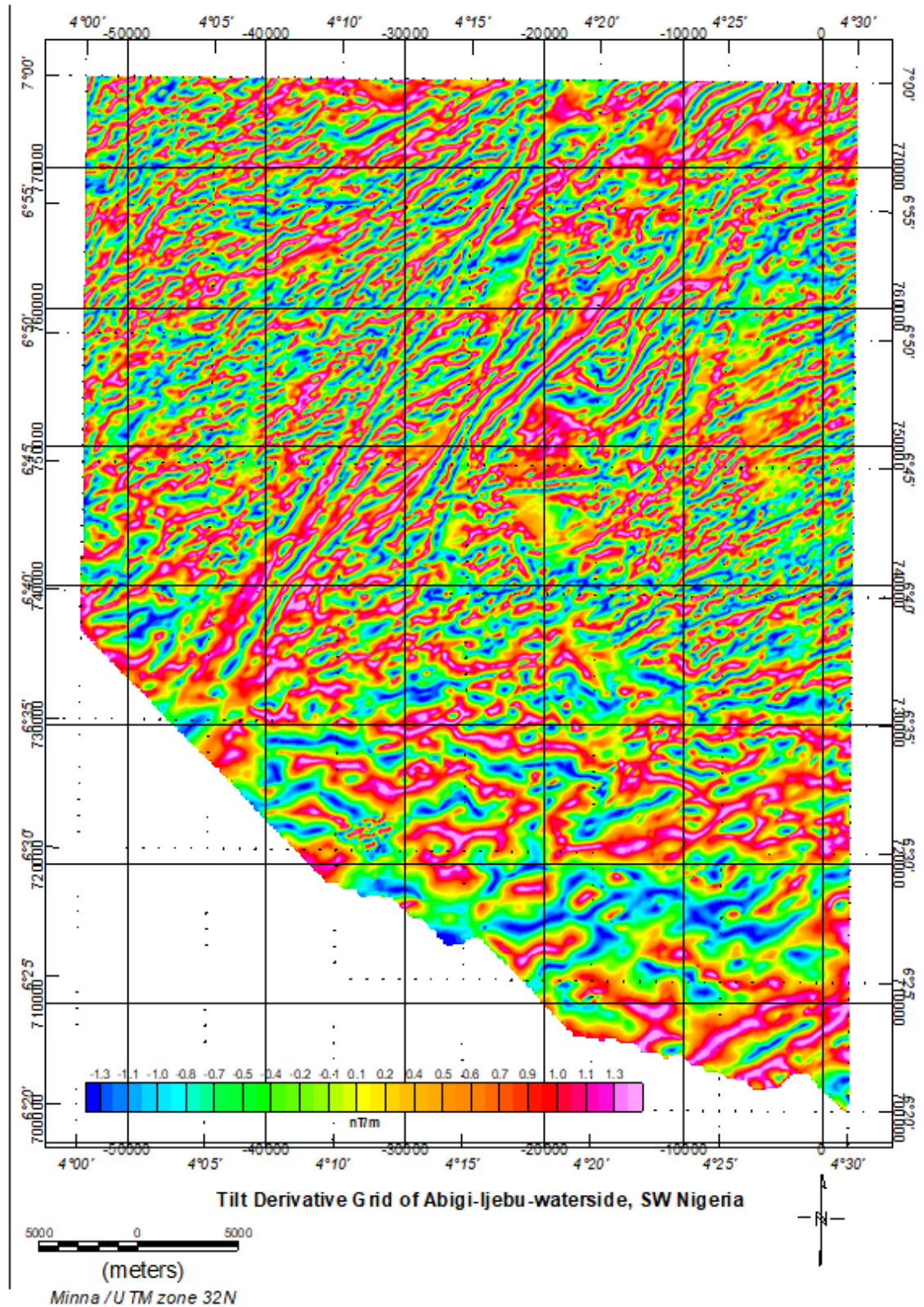
Euler deconvolution depth weighting technique employed to determine depths to magnetic sources in the study area using different structural indexes (0.0 - 3.0), presented geologically reasonable solutions with structural index of 1, which represents contact and faults model (Reid & Thurston, 2014). The Euler solution proportional depth plots indicate shallow depth solutions (above the reference datum) to the magnetic source in

the north while deep solutions characterize the south (Figure 9a). The Euler depth solution distribution across the study area (Figure 9b) indicates that the basement crustal rocks generally occur at about 100 m above the Minna reference datum in the northern part of the study area. The basement rocks gradually dips southwards as the crustal rocks get more depressed and deeper to create more accommodation for clastic sedimentary rocks at the edge of the Dahomey Basin. The basement configuration, allows the southern part of the study area, especially with continuous increase in depth to basement rocks southward, toward the Atlantic Ocean, to be overlain by relatively thick sedimentary rock units (in excess of 2 km). This implies that if the rate of basement depression presented by the Euler depth weighting of the onshore part of the Abigi-Ijebu waterside is maintained, projecting southward (offshore) beyond the area covered in this study, sedimentary thickness will exceed 3 km, few kilometers seaward into the Atlantic Ocean. The result of spectral analysis carried out on the aeromagnetic data of Abigi-Ijebu waterside as presented by the averaged power spectrum plot and the corresponding depth estimate (Figure 10) indicate shallow and relatively deep depth estimate results. The shallow depth results range from just above the reference datum to less than 500 m below the datum, while the relatively deeper depth result is more than 2000 m below the Minna datum. The shallow results represent the spectral analysis of magnetic data of regions where magnetic source (basement rocks) exit at the surface or very close to the ground surface which according to Euler deconvolution result coincide with the northern and part of the central portion of the study area. The relatively deeper depth as shown by the Euler solution is restricted to the southern end of the study area.

#### **Discussion of Results**

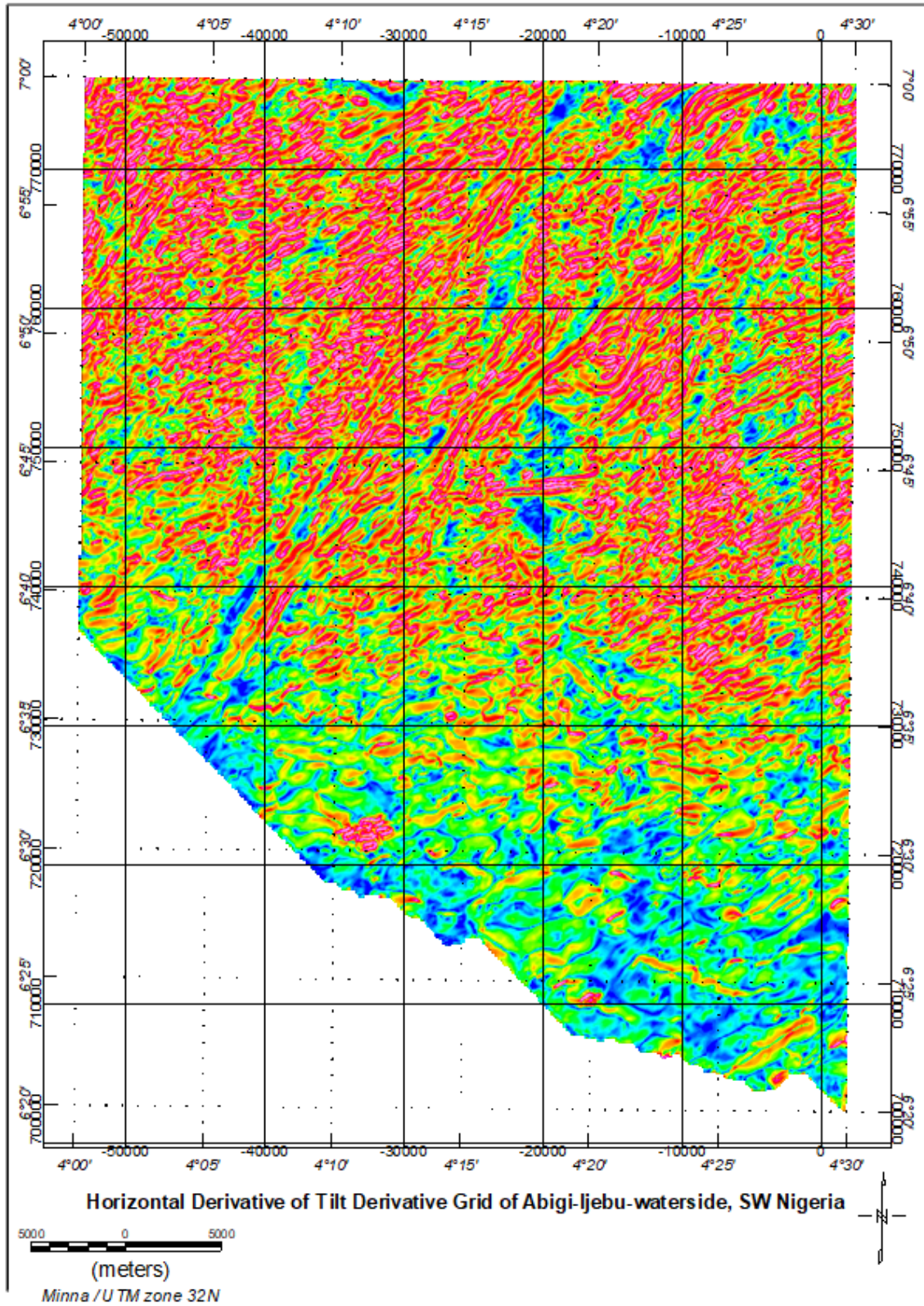
The various analyses carried out on the aeromagnetic data of Abigi - Ijebu waterside, as shown by the structural as well as the depth to basement mapping results indicate that the study area has undergone active tectonic activities in the past. This is evident by the numerous regional trending structural features, some of which are more than 15 km in length, in addition to the down warping basement geometry as shown from the spectral analysis and Euler deconvolution results. This unique basement characteristic is associated with sedimentary basin edge where the depression of the basement rocks (slab) began. This region is usually associated with numerous



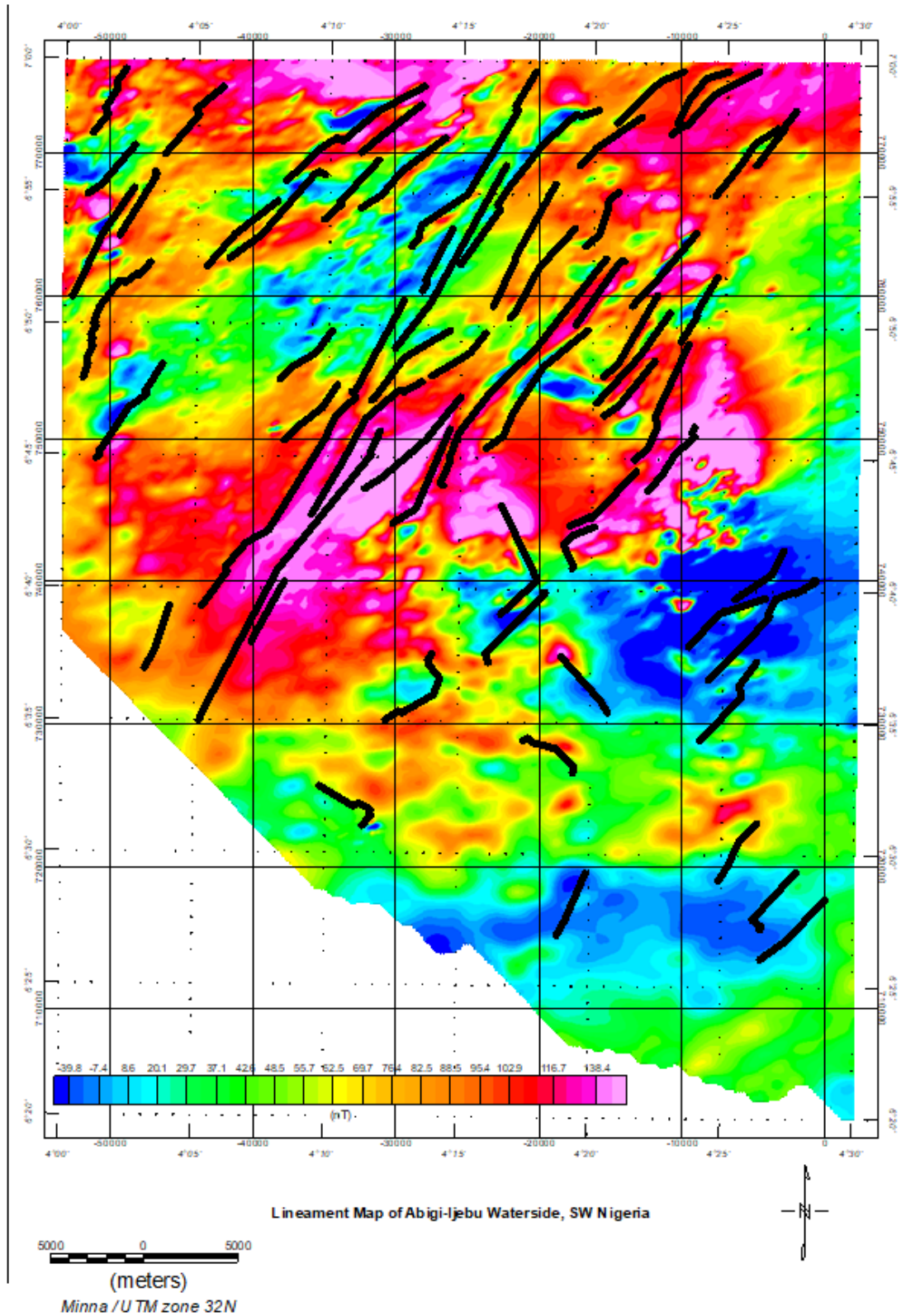


**Figure 6.** Tilt Angle Derivative Map of Abigi, Ijebu-waterside.





**Figure 7.** Total Horizontal Derivative of Tilt Derivative grid of Abigi, Ijebu-waterside.



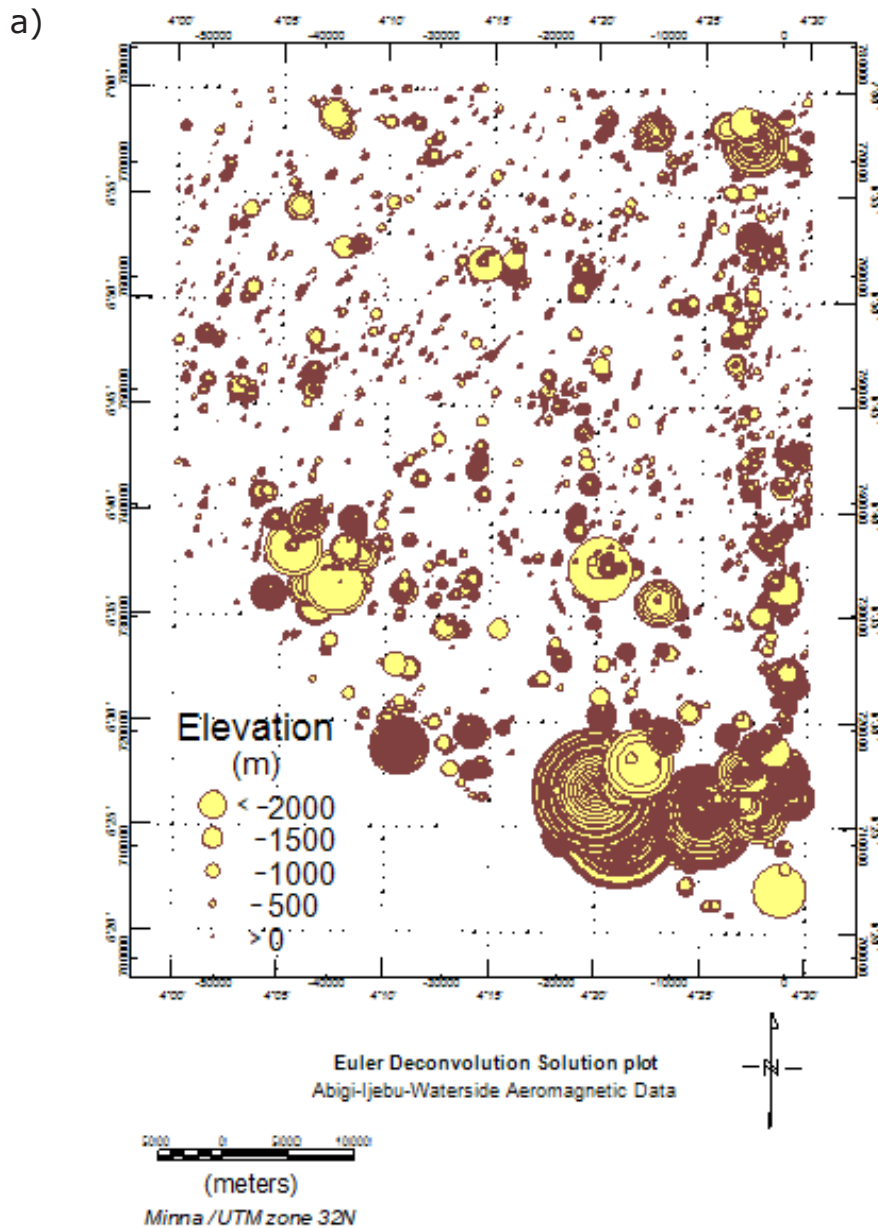
**Figure 8.** Lineament Map of Abigi-Ijebu-waterside, SW, Nigeria.



faults many of which could take the form of step faults or horst and graben in response to brittle deformation at the basin edge. Here the effect of associated flow/ductile deformation influenced by the magmatic activity that initiated the formation of the basin may be minimal.

Previous authors based on interpretation of some few wells and outcrop studies have described the basement topography of the eastern Dahomey Basin, which Abigi – Ijebu

waterside belongs, as composed of a series of horst and graben structures (Omatsola & Adegoke, 1981; Olabode & Adekoya, 2007). The study area is a small section of the Dahomey Basin which was described to span 440 km in length (Francheteau & Le Pichon, 1972) and therefore represents a part in terms of structure and basement geometry. The results obtained through the analyses of magnetic data of the study area confirmed the occurrence of regional structures whose trend agrees with previous works. However the depth



**Figures 9.** (a) Euler Solutions Depth proportional plots.

b)

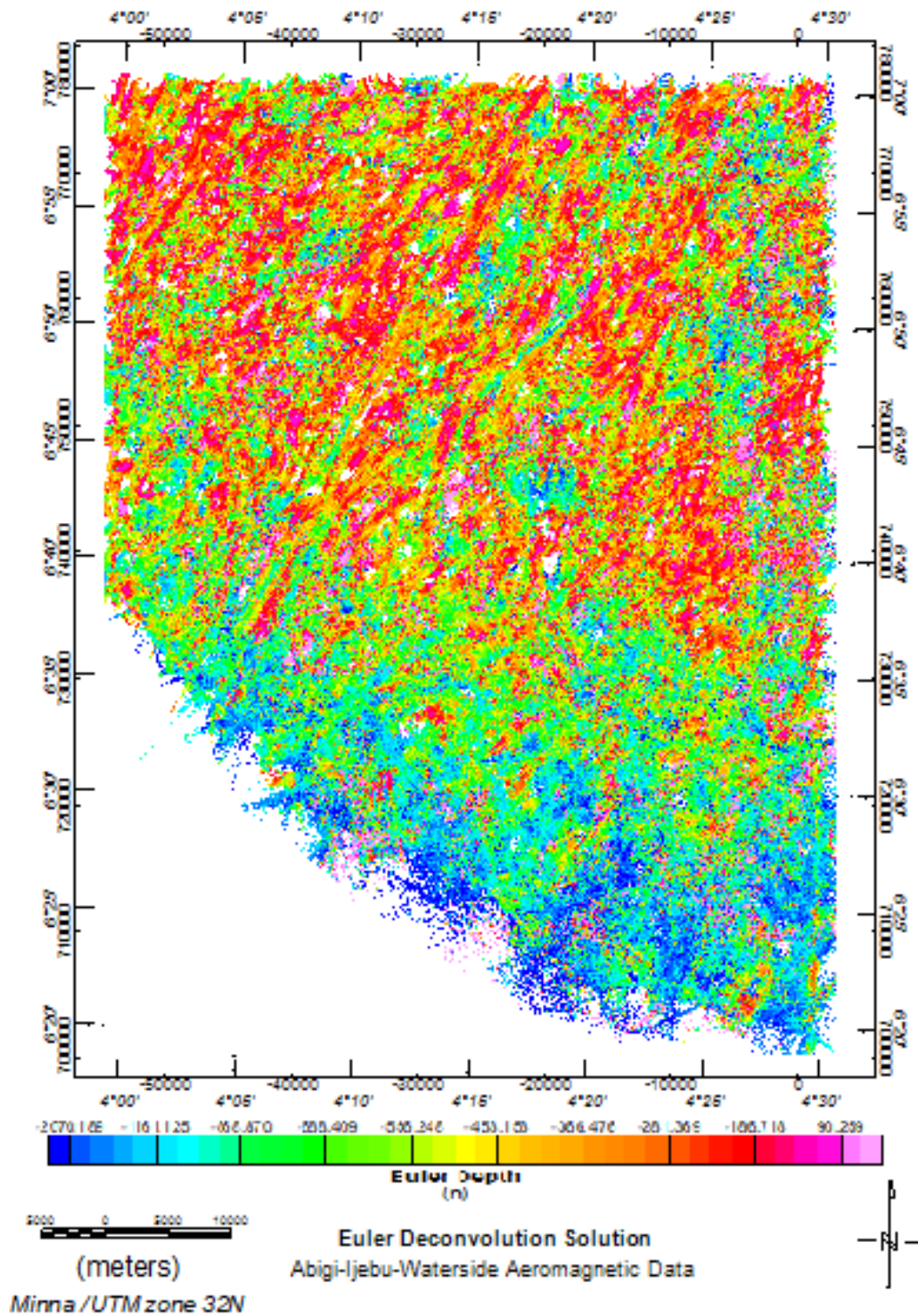


Figure 9. (b) Euler Depth distribution across the study area (Structural Index (N) 0.1).

weighting results did not indicate sharp drop in depth characteristic of rifting which could support the horst and graben model around the study area, rather a gentle increase in depth from about 100 m above the reference datum in the north to around 2000 m in the south. The distribution of the Euler solutions points as well as the narrow range of data suggest a rather gentle step increment in depth to basement rocks that could be attributed to step faulting.

The integration of the obtained results from this study and previous studies such as the works of Francheteau & Le Pichon, (1972), Burke *et al* (1976), Omatsola & Adegoke, (1981), Olabode and Adekoya (2007) among others suggest that the study area may be part of the regional horst and graben structure but exhibit step faulting around the study area which causes the thickness of clastic sediment overlying the basement rocks to progressively thicken southward as the basement rocks dip southwards and the crustal slab get more and more depressed towards the sea.

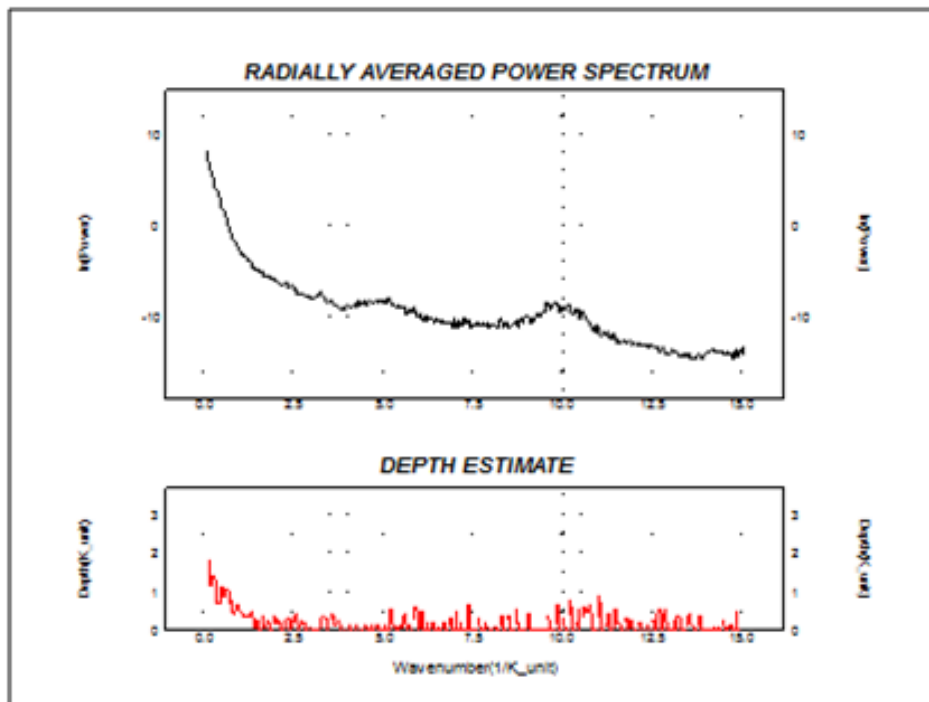
This probably explains the reason for the occurrence of tar sands instead of oil and gas pools in the area. This is because oil and gas generation, accumulation and preservation require considerable depth, usually in excess 3 km, to guarantee the appropriate temperature and pressure conditions required for generation

of hydrocarbon from organic matter as well as maintenance of the cap rock integrity for the preservation of the generated hydrocarbon. Where the thickness of the sedimentary unit is less than this minimum average, poorly matured organic matter as well as poorly preserved generated hydrocarbon will result which upon further exposure to the surface conditions such as biodegradation will generate bitumen, bituminous or and tar sands.

The discovery of commercial accumulations of hydrocarbon in the eastern and western offshore of the Nigerian sector of the Dahomey Basin, such as. Aje and Ogo oil and gas fields suggests the basement topography further south support the accumulation of up to 3 km of clastic sediment which is one of the most important petroleum accumulation and preservation requirements. This therefore points to south of the study area (into the deep offshore) as prospective area for petroleum prospect evaluation and development.

## Conclusions

The analysis and interpretation of various enhanced, derivative and attribute maps generated from the high resolution aeromagnetic data of Abigi-Ijebu waterside in southwestern Nigeria revealed the distribution of crystalline basement rocks at considerable



**Figure 10.** Radially Average Power Spectrum Analysis of Magnetic data of Abigi – Ijebu waterside, SW Nigeria.

depth, identified structural framework as well as the basement topography which determines the thickness of sedimentary units overlying the Ijebu waterside region of the Nigerian sector of the Dahomey Basin. The structural framework as defined by the enhanced linear structures derived from the application of derivative filters indicate occurrence of regional linear structures, some of which are more than 15 km in length and generally trend NE - SW. The gradual increase in depth to magnetic source from about 100 m to over 2.0 km southward as obtained from spectral analysis and Euler deconvolution solutions indicate a gentle increase in thickness of the overlying sedimentary unit towards the south as the crustal rocks get depressed through the aid of regional faults which gradually step down the basement rocks southward toward the ocean. The basement geometry and structural framework point south of the study area, toward the offshore of the Dahomey Basin as the appropriate direction to focus hydrocarbon exploration energy since further basement depression and corresponding thickness of sedimentary rocks could support hydrocarbon generation and preservation.

## References

- Adegoke, O. S., 1969, Eocene Stratigraphy of Southern Nigeria. Bureau de Recherches Geologiques et Minières Memoir, 69, 23-48.
- Ako, B. D., Adegoke, O. S., & Petters, S. W., 1980, Stratigraphy of the Oshosun Formation in South-Western Nigeria. Jour. Min. Geol., 17, 97-106.
- Arkani-Hamed, J., 1988, Differential reduction to the pole of regional magnetic anomalies. Geophysics, 53 (12), 1592-1600.
- Burke, K. C., Freeth, S. J. & Grant, N. K. 1976. The structure and sequence of geological events in the Basement Complex of Ibadan area, Western Nigeria, Prec. Res. Vol. 3 No. 6.
- Baranov, V. & Naudy, H., 1964, Numerical calculation of the formula of reduction to the magnetic pole. Geophysics, 29, 67-79.
- Billman, H. G., 1976, Offshore stratigraphy and paleontology of the Dahomey basin, West Africa. Nigerian Association of Petroleum Explorationist Bulletin, 7, 121-139.
- Brownfield, M. E. & Charpentier, R. R., 2006, Geology and Total Petroleum Systems of the Gulf of Guinea Province of West Africa U.S. Geological Survey Bulletin 2207- C.
- Burke, K. C, Freeth, S. J. & Grant, N. K., 1976, The structure and sequence of geological events in the Basement Complex of Ibadan area Western Nigeria Precamb. Res. 3:537-545.
- Cooper, G.R.J. & Cowan, D. R., 2008, Edge enhancement of potential-field data using normalized statistics. *Geophysics*, 73 (3), H1-H4.
- Ekinci Y. L., Ertekin C. & Yiğitbaş E., 2013, On the effectiveness of directional derivative based filters on gravity anomalies for source edge approximation: synthetic simulations and a case study from the Aegean graben system (western Anatolia, Turkey) J. Geophys Eng. Vol. 10 (3) :035005. doi:10.1088/1742-2132/10/3/035005.
- Francheteau, J. & Le Pichon, X., 1972, Marginal fracture zones as structural framework of continental margins in South Atlantic ocean. *The American Association of Petroleum Geologists Bulletin*, 56(6), 991-1007.
- Ferreira, F. J. F., de Castro, L. G., Bongiolo, A. B. S., de Souza, J. & Romeiro, M. A. T., 2011, Enhancement of the total horizontal gradient of magnetic anomalies using tilt derivatives: Part II—Application to real data: 81st Annual International Meeting, SEG, Expanded Abstracts, 887-891.
- Garcia. J. G., & Ness, G. E., 1994, Inversion of the power spectrum from magnetic anomalies. Geophysics, vol. 59, 3, pp. 391-401.
- Grant, N. K. 1971. South Atlantic, Benue trough and Gulf of Guinea Cretaceous triple junction. *Bull. geol. Soc. Am.* 82,2295-2298.
- Idowu J. O. & Ekweozor C. M., 1993, Petroleum potential of cretaceous shales in the Upper Benue trough, Nigeria. J. Petrol. Geol., 21, 105-118.
- Jones, H. A. & Hockey, R. D., 1964. The Geology of part of southwestern Nigeria; *Geological Survey of Nig. Bull*, 31: 101-104.
- Keating P. & Zerbo L., 1996, An improved technique for reduction to the pole at low latitudes. Geophysics, 61(1), 131-137.
- Kogbe, C. A., 1974, Paleo-ecologic significance of vertebrate fossil in the Dukamaje and Dange Formations (Maastrichtian and Paleocene) of northwestern Nigeria. Jour. Min. Geol.(Nigeria). 8, 49-55.



- Li, X., 2008, Magnetic reduction-to-the-pole at low latitudes: observations and considerations. *Lead Edge*, 27, 990–1002.
- Lu, R.S., Mariano, J & Willen, D. E., 2003, Differential reduction of magnetic anomalies to the pole on a massively parallel computer. *Geophysics*, 68 (6), 1945–1951.
- Macleod, I. N., Jones, K. & Dai, T. F., 1993, 3-D analytic signal in the interpretation of total magnetic field data at low magnetic latitudes. *Explor. Geophys.*, 24, 679–688.
- Miller, H. G. & Singh, V., 1994, Potential field tilt - a new concept for location of potential field sources. *Journal of Applied Geophysics*, 32, 213–217.
- Mushayandebvu, M. F., Van Driel, P., Reid, A. B. & Fairhead, J. D. 2001, Magnetic source parameters of two-dimensional structures using extended Euler deconvolution. *Geophysics*, 66, pp814–823.
- Nabighian, M. N. & Hansen, R. O. 2005, Unification of Euler and Werner deconvolution in three dimensions via the generalized Hilbert transform, *Geophysics*, 66.
- Nigeria Geological Survey Agency (NGSA), 2004, Airborne Geophysical Digital data Dissemination Guideline.
- Nigeria Geological Survey Agency (NGSA), 2009, Geological map of Southwestern Nigeria.
- Obaje, N. G., 2009, Geology and Mineral Resources of Nigeria. Lecture note in Earth Sciences, Heidelberg. 219pp.
- Ogbe, F. A. G., 1970, Stratigraphy of strata exposed in the Ewekoro Quarry Western Nigeria. In: (Dessauvague, T. F. J. and Whiteman, A. J. (eds). *African Geology* University of Ibadan Press, Nigeria, 305–324.
- Okosun, E. A., 1990, A review of the Cretaceous stratigraphy of the Dahomey Embayment, West Africa. – *Cretaceous Research*, 11, 17–27.
- Olabode, S. O. & Adekoya, J. A., 2007, Seismic stratigraphy and development of Avon canyon in Benin (Dahomey) basin, southwestern Nigeria. *Jour. of African Earth Sciences* 50, 286–304.
- Omatsola, M. E. & Adegoke, O. S., 1981, Tectonic evolution and Cretaceous Stratigraphy of the Dahomey Basin. *Jour. of Mining Geology*, 8, 130–137.
- Paterson, N. R. & Reeves, C.V., 1985, Applications of gravity and magnetic surveys : the state-of-the-art in 1985. *Geophysics*, 50, 2558–2594.
- Rahaman, M. A., 1976, Review of the Basement Geology of Southwestern Nigeria. In: *Geology of Nigeria*, edited by C.A. Kogbe, Elizabethan Publ. Co., Lagos. pp. 41–58.
- Reeves C. V., 2005, *Aeromagnetic surveys: Principles, practice and Interpretation*. 155pp.
- Reid A. B., Allsop I. M., Grsner H, Millet A. J. & Somerton I. W., 1990, "Magnetic interpretation in three dimensions using Euler deconvolution", *Geophysics*, 55, 80 – 91
- Reid, A. B. & Thurston, J. B., 2014, The structural index in gravity and magnetic interpretation: Errors, uses, and abuses, *Geophysics*, 79 (4), J61–J66.
- Salem, A., Williams, S., Fairhead, J. D., Ravat, D. & Smith, R., 2007, Tilt depth method: A simple depth estimation method using first-order magnetic derivatives: *The Leading Edge*, 26, 1502–1505, doi: 10.1190/1.2821934.
- Silva, J. C. B., 1986, Reduction to the pole as an inverse problem and its application to low latitude anomalies. *Geophysics*, 51 (2), 369–382.
- Thompson, D. T., 1982, EULDPH. A New technique for making computer assisted depth estimates from magnetic data. *Geophysics*, 47, 31–37.
- Verduzco, B., Fairhead, J. D. & Green, C. M., 2004, New insights into magnetic derivatives for structural mapping. *The Leading Edge*, 23 (2), 116–119.
- Webring, M., 1981, MINC, a gridding program based on minimum curvature: U.S. Geological Survey Open-File Report 81-1224, 43 p.
- Whitehead, N., & Musselman, C., 2008, *Montaj Grav/Mag Interpretation: Processing, Analysis and Visualization System for 3D Inversion of Potential Field Data for Oasis montaj* 63 pp.